

JARGY CO., LTD.

Test Report

Model : CBL-D302MBS-5m
Camera Brand Name : Basler

Ver : 1.0

Date : 2016/3/28

Test Platform

| | | | |
|---------|-------------------------------|--|--|
| Type | NB | | |
| Model | MAC | | |
| OS | Windows 8.1 Pro 64-bit | | |
| CPU | Intel Core i7-3615QM | | |
| HDD | SATA III SSD 128GB | | |
| RAM | DDR3 8GB | | |
| USB 3.0 | PCH 2 Ports(Intel Z77 Native) | | |

| | | | |
|--|--|--|--|
| | | | |
| | | | |

Tested Camera : acA2040-90uc

Tested time : 87h



pylon Viewer

File View Camera Tools ?

Devices

- USB
 - acA2040-90um (21758780)

Auto-Scan

Features [acA2040-90um (21758780)]

| Feature | Value |
|--|-------|
| Favorites | |
| Add favorites by right-clicking a feature below. | |
| acA2040-90um (2... | |
| Transport Layer | |
| Stream Parameters | |
| Image Format Con... | |

User Level: Guru Show Unavailable Favorites Polling

90.0 fps (377.7 MB/s) Images: 28,255,121; Errors: 0 2048 x 2048 100 %

Message Log

| Level | Time | Source | Message |
|-------------|-------------------------|-------------------------|--|
| Information | 2016-03-24 17:12:22.742 | acA2040-90um (21758780) | Continuous shot on "acA2040-90um (21758780)" has been started. |
| Information | 2016-03-24 17:12:22.205 | acA2040-90um (21758780) | "acA2040-90um (21758780)" has been opened. |
| Information | 2016-03-24 17:12:13.981 | acA2040-90um (21758780) | "acA2040-90um (21758780)" has been detected. |
| Information | 2016-03-24 17:12:13.941 | pylon Viewer | pylon Viewer 4.2.0.4240 32-Bit has been started. |

上午 08:21
2016/3/28

JARGY CO., LTD.

Test Report

Model : CBL-D302MBS-7m
Camera Brand Name : Basler

Ver : 1.0

Date : 2016/4/1

Test Platform

| | | |
|---------------------------------------|--|--|
| Type NB | | |
| Model MAC | | |
| OS Windows 10 Pro 64-bit | | |
| CPU Intel Core i7-4770HQ | | |
| HDD SATA III SSD 256GB | | |
| RAM DDR3 16GB | | |
| USB 3.0 PCH 2 Ports(Intel Z87 Native) | | |
| | | |
| | | |
| | | |

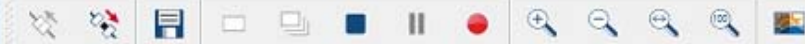
Tested Camera : acA2040-90uc

Tested time : 87h



pylon Viewer 64-Bit - [acA2040-90uc (21534528)]

File View Camera Tools ?



Devices

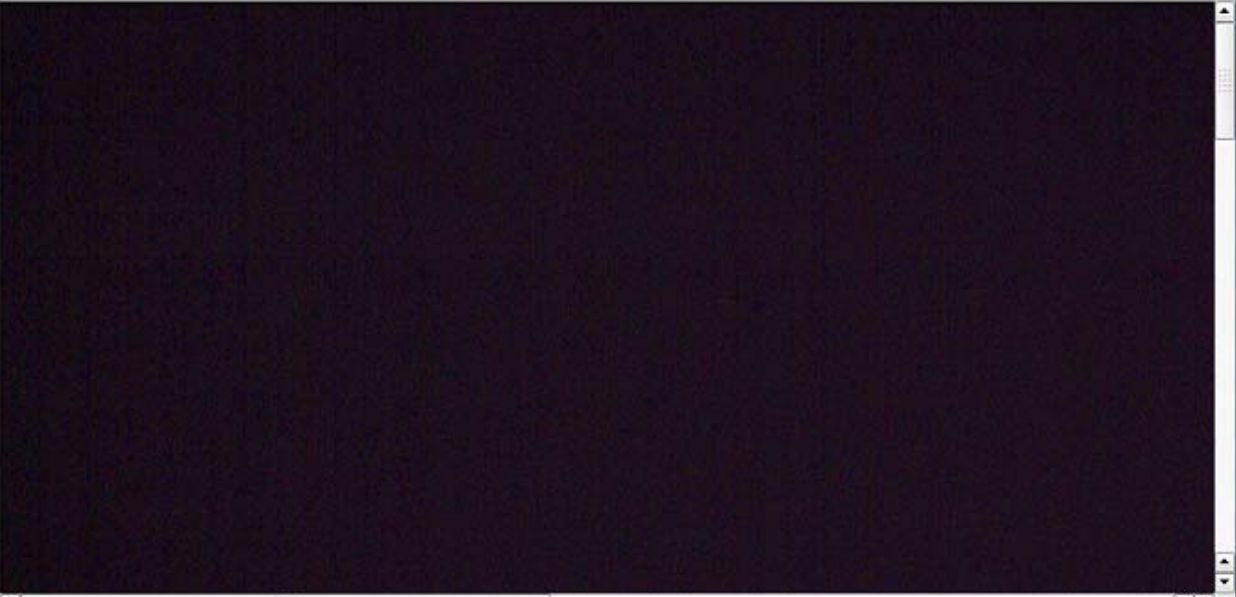
- USB
 - acA2040-90uc (21534528)

Auto-Scan

Features [acA2040-90uc (21534528)]

| Feature | Value |
|-------------------------|-------|
| Favorites | |
| acA2040-90uc (21534528) | |
| Transport Layer | |
| Stream Parameters | |
| Image Format Conversion | |

User Level: Beginner Show Unavailable Favorites Polling



90.1 fps (376.3 MB/s) Images: 28,336,084; Errors: 0 2040 x 2046 100 %

Message Log

| Level | Time | Source | Message |
|-------------|-------------------------|-------------------------|--|
| Information | 2016-03-28 18:26:08.865 | acA2040-90uc (21534528) | Continuous shot on "acA2040-90uc (21534528)" has been started. |
| Information | 2016-03-28 18:26:07.877 | acA2040-90uc (21534528) | "acA2040-90uc (21534528)" has been opened. |
| Information | 2016-03-28 18:25:59.287 | acA2040-90uc (21534528) | "acA2040-90uc (21534528)" has been detected. |
| Information | 2016-03-28 18:25:59.261 | pylon Viewer | pylon Viewer 4.2.2.5468 64-Bit has been started. |

Message Log Feature Documentation

JARGY CO., LTD.

Test Report

Model : CBL-D302MBS-10m

Ver : 1.0

Date : 2016/4/11

Camera Brand Name : Basler

Test Platform

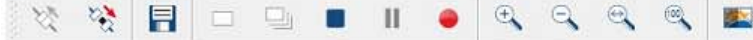
| | | | |
|---------|-------------------------------|--|--|
| Type | NB | | |
| Model | MAC | | |
| OS | Windows 10 Pro 64-bit | | |
| CPU | Intel Core i7-4770HQ | | |
| HDD | SATA III SSD 256GB | | |
| RAM | DDR3 16GB | | |
| USB 3.0 | PCH 2 Ports(Intel Z87 Native) | | |

| | | | |
|--|--|--|--|
| | | | |
| | | | |

Tested Camera : acA2040-90uc

Tested time : 114h





Devices

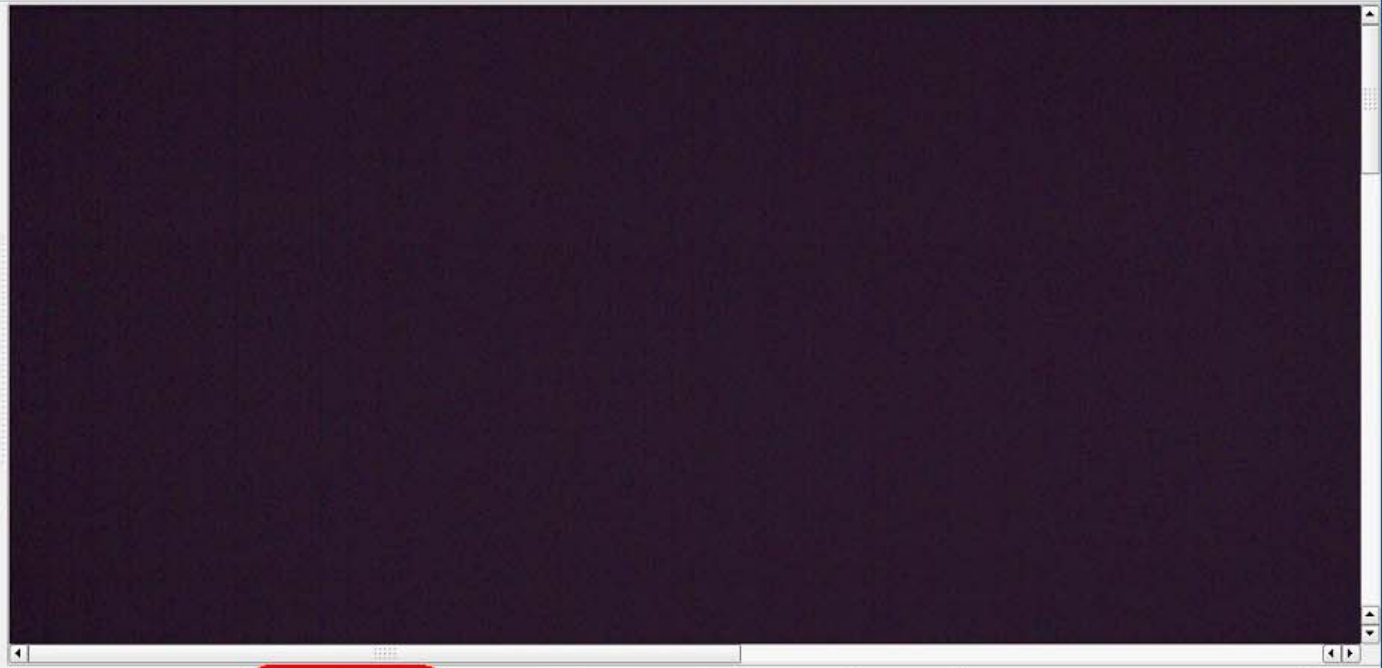
- USB
 - acA2040-90uc (21534528)

Auto-Scan

Features [acA2040-90uc (21534528)]

| Feature | Value |
|--|-------|
| Favorites | |
| Add favorites by right-clicking a feature below. | |
| acA2040-90uc (21534528) | |

User Level: Beginner Show Unavailable Favorites Polling



90.1 fps (376.2 MB/s) Images: 37,159,369; Errors: 0 2040 x 2046 100 %

Message Log

| Level | Time | Source | Message |
|-------------|-------------------------|-------------------------|--|
| Information | 2016-04-06 13:39:55.676 | acA2040-90uc (21534528) | Continuous shot on "acA2040-90uc (21534528)" has been started. |
| Information | 2016-04-06 13:39:55.128 | acA2040-90uc (21534528) | "acA2040-90uc (21534528)" has been opened. |
| Information | 2016-04-06 13:39:26.746 | acA2040-90uc (21534528) | "acA2040-90uc (21534528)" has been detected. |
| Information | 2016-04-06 13:39:26.719 | pylon Viewer | pylon Viewer 4.2.2.5468 64-Bit has been started. |

Message Log Feature Documentation

JARGY CO., LTD.

Test Report

Model : CBL-D302MBS-15m

Ver : 1.0

Date : 2016/4/6

Camera Brand Name : Basler

Test Platform

| | | | |
|---------|-------------------------------|--|--|
| Type | NB | | |
| Model | MAC | | |
| OS | Windows 10 Pro 64-bit | | |
| CPU | Intel Core i7-4770HQ | | |
| HDD | SATA III SSD 256GB | | |
| RAM | DDR3 16GB | | |
| USB 3.0 | PCH 2 Ports(Intel Z87 Native) | | |

| | | | |
|--|--|--|--|
| | | | |
| | | | |

Tested Camera : acA2040-90uc

Tested time : 118h



Devices

- USB
 - acA2040-90uc (21534528)

Auto-Scan

Features [acA2040-90uc (21534528)]

| Feature | Value |
|-------------------------|-------|
| Favorites | |
| acA2040-90uc (21534528) | |
| Transport Layer | |
| Stream Parameters | |
| Image Format Conversion | |

User Level: Beginner Show Unavailable Favorites Polling



90.1 fps (376.2 MB/s) Images: 38,409,765; Errors: 0 2040 x 2046 100 %

Message Log

| Level | Time | Source | Message |
|-------------|-------------------------|-------------------------|--|
| Information | 2016-04-01 09:58:41.105 | acA2040-90uc (21534528) | Continuous shot on "acA2040-90uc (21534528)" has been started. |
| Information | 2016-04-01 09:58:39.853 | acA2040-90uc (21534528) | "acA2040-90uc (21534528)" has been opened. |
| Information | 2016-04-01 09:58:23.589 | acA2040-90uc (21534528) | "acA2040-90uc (21534528)" has been detected. |
| Information | 2016-04-01 09:58:23.571 | pylon Viewer | pylon Viewer 4.2.2.5468 64-Bit has been started. |

Message Log Feature Documentation